

GS750V

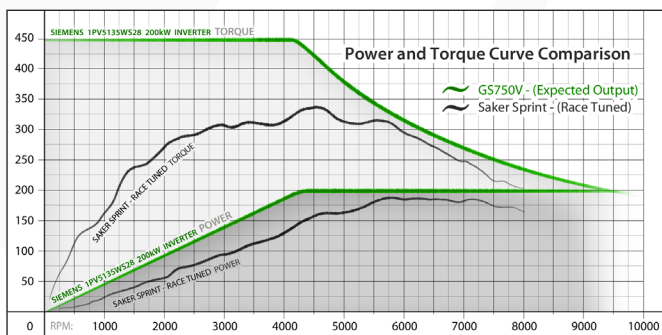
The Ultimate In Electric Performance

Introducing the Greenstage GS750V

The more things change the more they stay the same. You don't want to compromise on performance, in fact you want an edge over the competition.

Sometimes to make a real gain you need to look outside the square. The GS750V is one such example. Designed from the beginning to be a no compromises car with blistering performance. The result is a car not previously imaginable with internal combustion engine technology.

450 Nm (330 ft lbs) of torque from 0 RPM. Yes that's right the motor will provide 450 Nm of torque from a standing start, all the way up to where the car becomes limited by its power output. The maximum power output is 200 kW (268 bhp).



Inverter manufacturer's specifications: final performance may vary.

The the power output of the motor steadily climbs from 0 RPM through to 4,200 RPM. At 4,200 RPM you are getting the full 200kW, this is maintained all the way through to the red line of 10,000 RPM. If you are used to the peaky nature of a petrol powered car (hunting for that power band), this may sound to good to be true. The difference is, this is no ordinary performance car, this is an electric performance car. Let the revolution begin!

The design goal of the GS750V was to build the best electric race car possible while retaining the option to road register the car for those who desire performance and engineering excellence in their everyday lives.

Specifications:

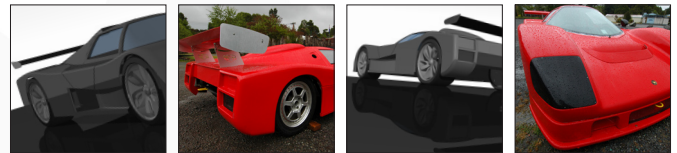
Power: 268HP / 200KW Torque: 450 Nm

Weelbase: 2565mm

Dimensions: L - 3940mm x W - 1830mm x H - 1020mm

Weight: 980Kg

Brakes: 4 wheel discs + regenerative braking



market driven change for the planet



The GS750V has evolved from Saker's race proven GT



www.
greenstage
.co.nz